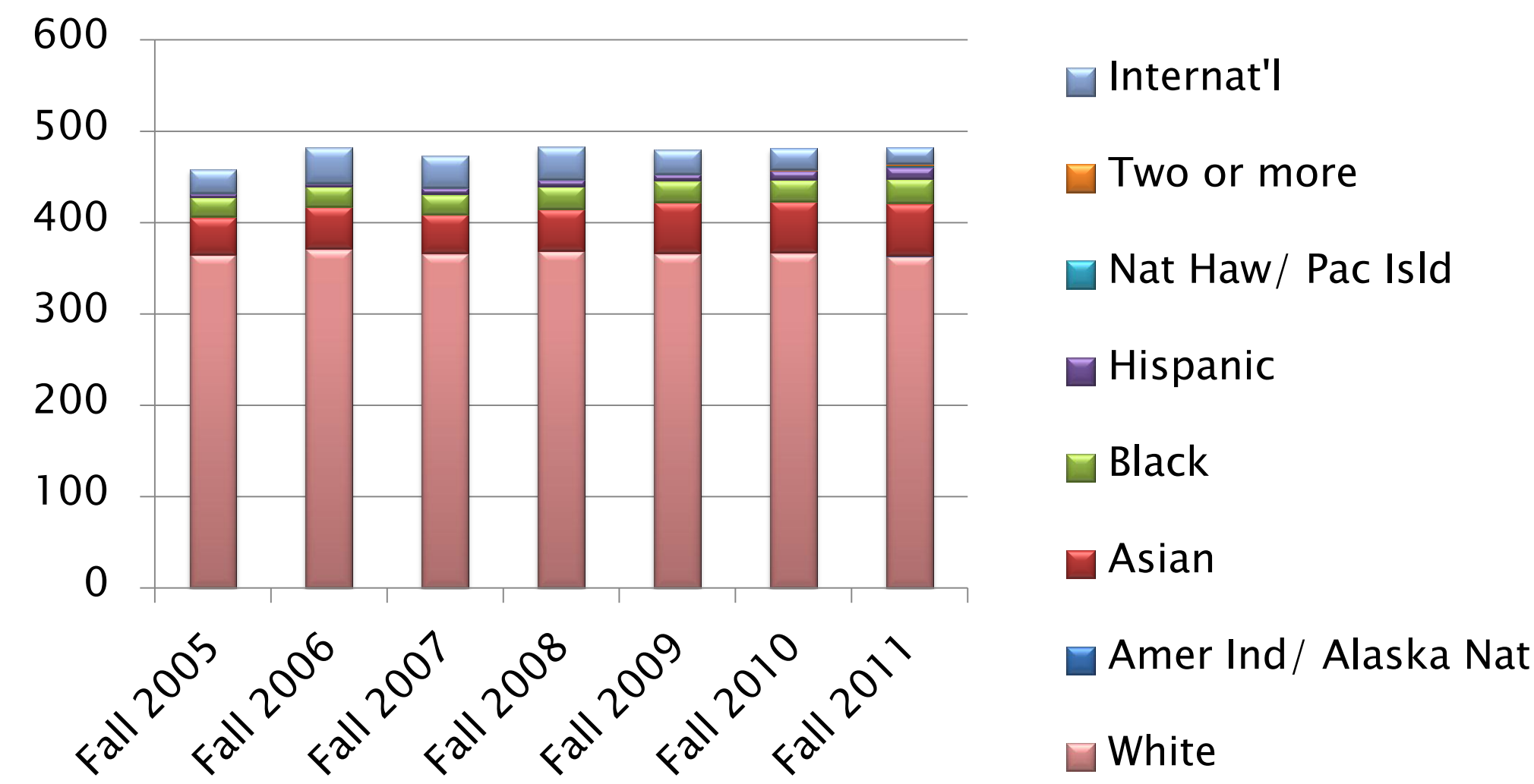
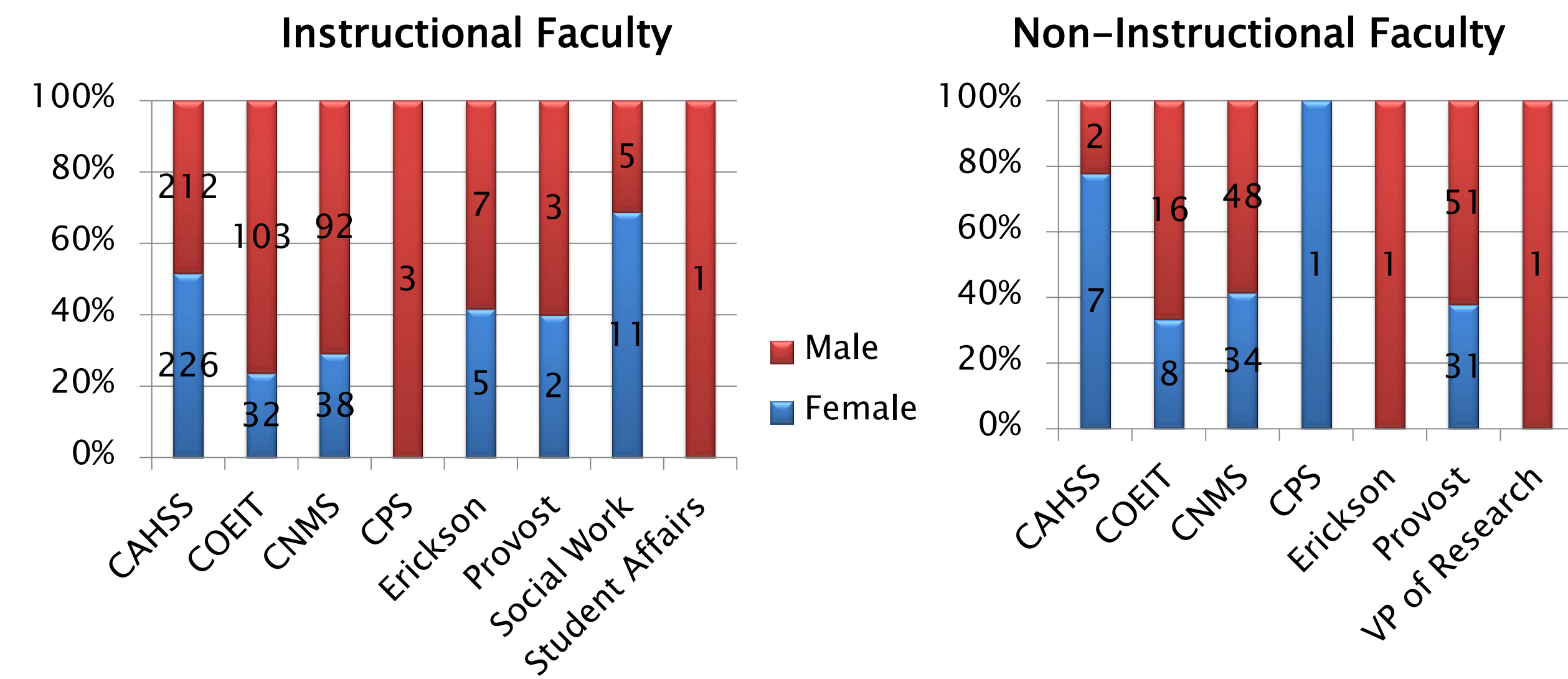


LOOK WHO'S WORKING AT UMBC...

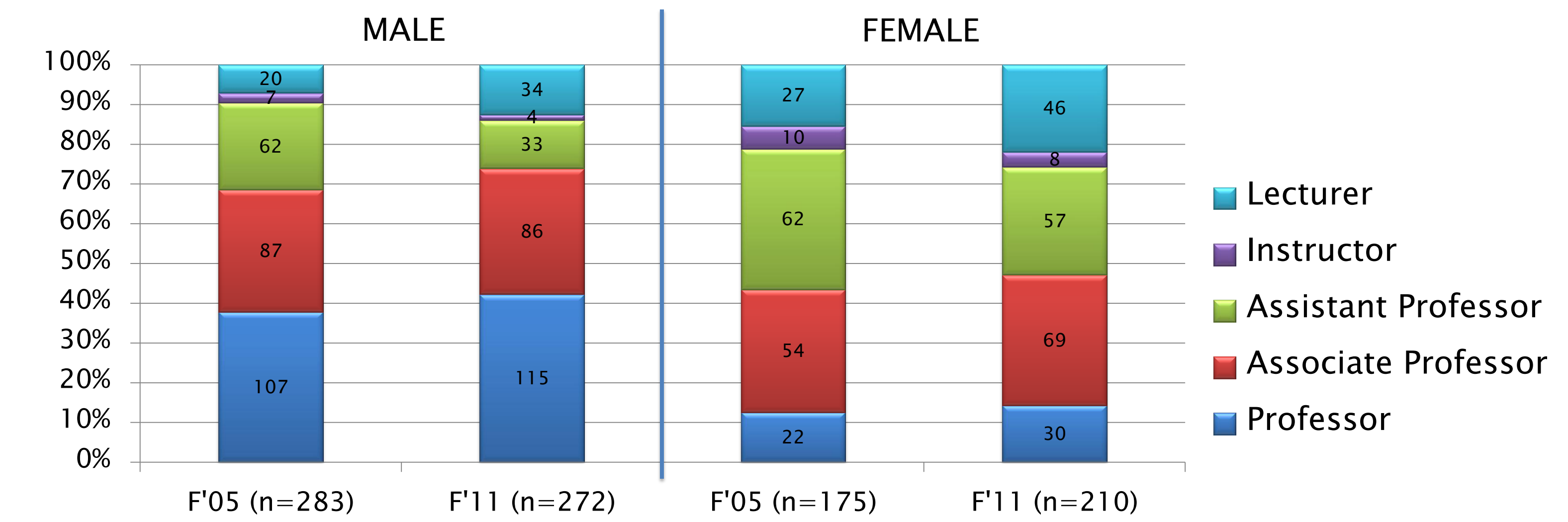
Full-Time Instructional Faculty by Race/Ethnicity*



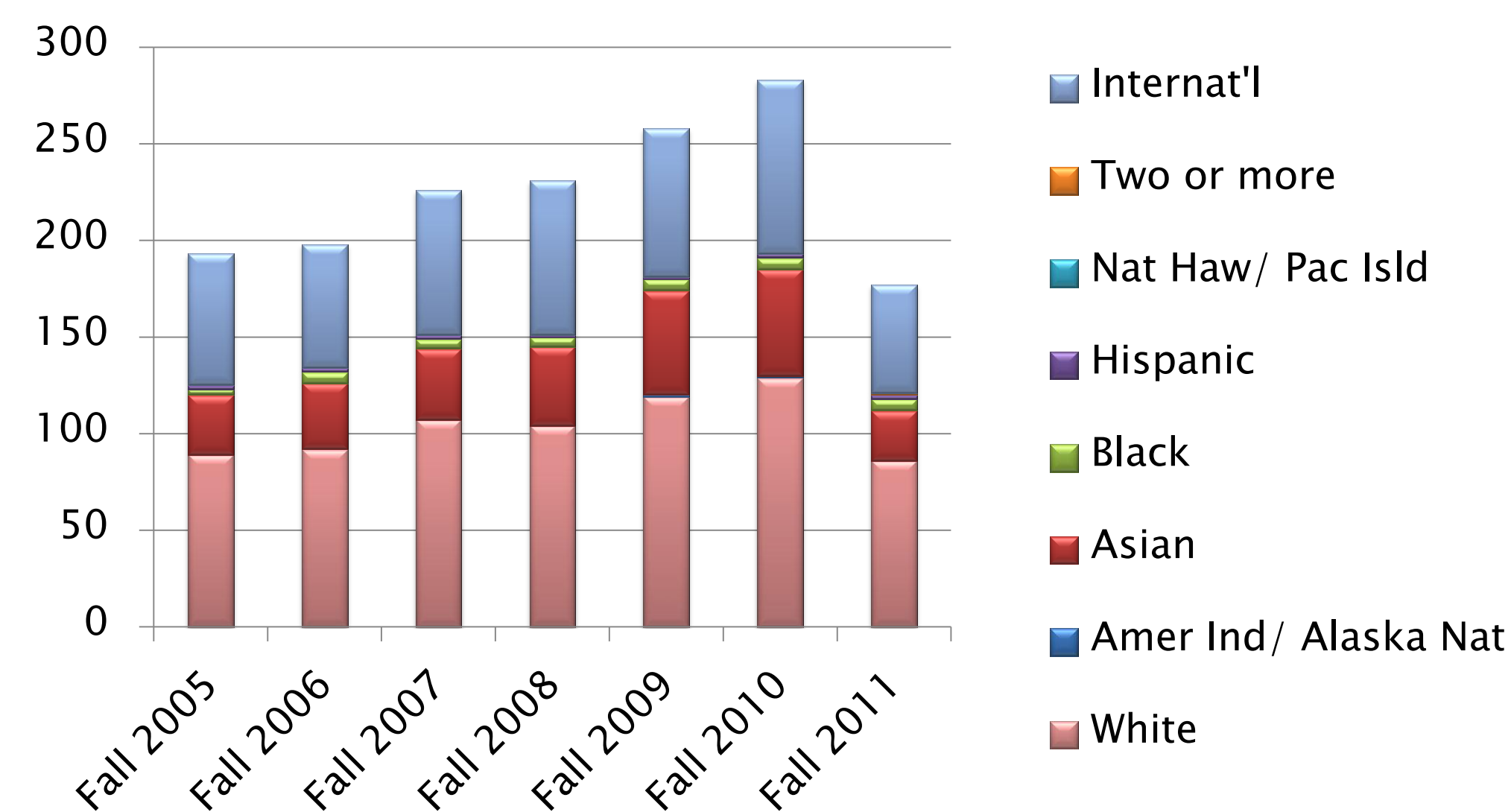
Fall 2011 Faculty by Gender & College/ Division



Full-Time Instructional Faculty by Rank & Gender Fall 2005 vs. Fall 2011



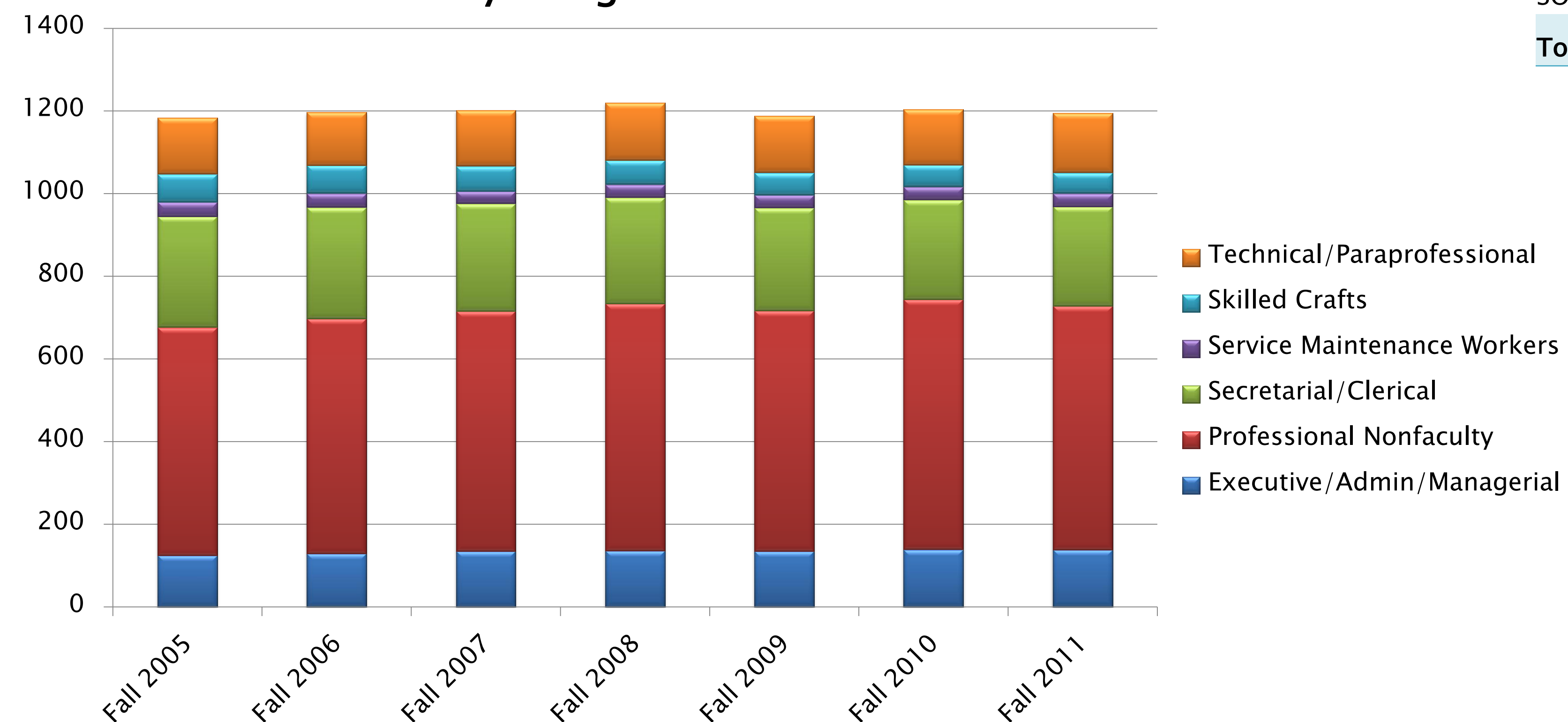
Full-Time Non-Instructional Faculty by Race/Ethnicity*



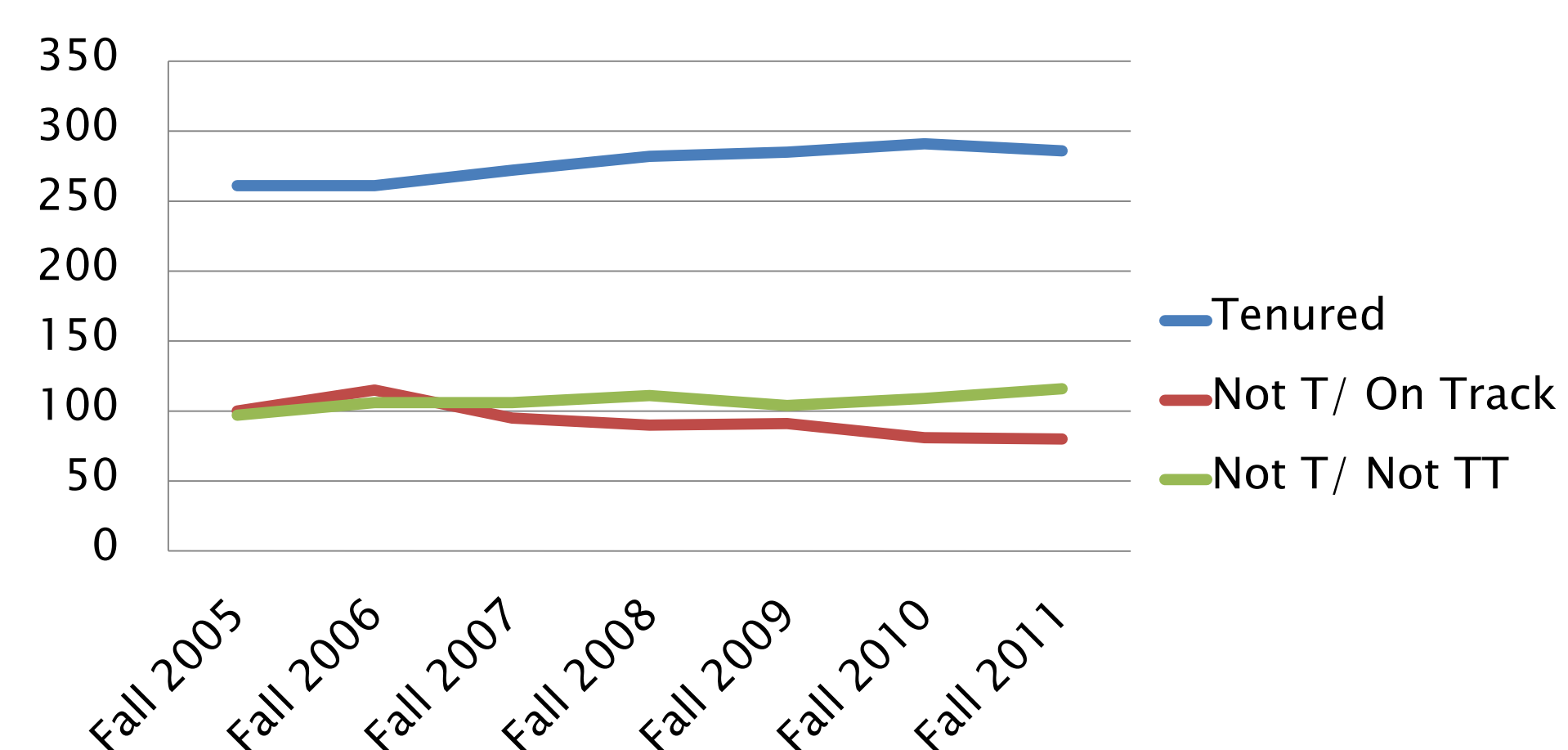
Instructional Faculty by College and Employment Status

	Fall 2005	Fall 2006	Fall 2007	Fall 2008	Fall 2009	Fall 2010	Fall 2011
Full-Time	458	482	473	483	480	481	482
CAHSS	249	254	259	266	265	265	266
COEIT	91	92	86	89	88	88	84
CNMS	101	109	105	105	107	110	111
CPS	3	4	3	3	2	2	2
Erickson		2	5	5	3	2	3
Provost	4	11	5	4	4	4	4
SOWK	9	9	9	10	10	9	11
OSA	1	1	1	1	1	1	1
Part-Time	295	280	273	275	250	243	258
CAHSS	206	201	184	187	166	154	172
COEIT	40	37	42	42	50	50	51
CNMS	27	19	19	21	17	15	19
CPS	7	11	17	13	1	1	1
Erickson	1	1	2	4	7	13	9
Provost	6	2	3	2	3	3	1
SOWK	8	9	6	6	6	7	5
Total	753	762	746	758	730	724	740

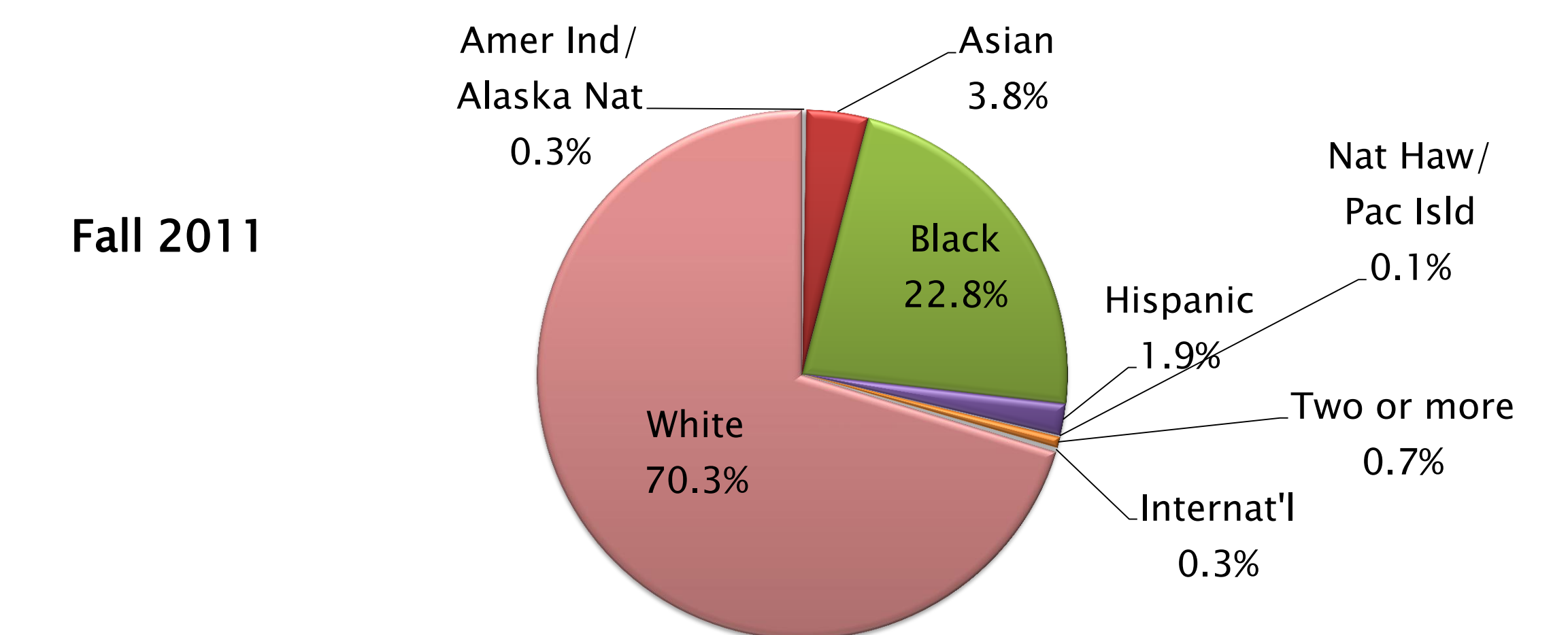
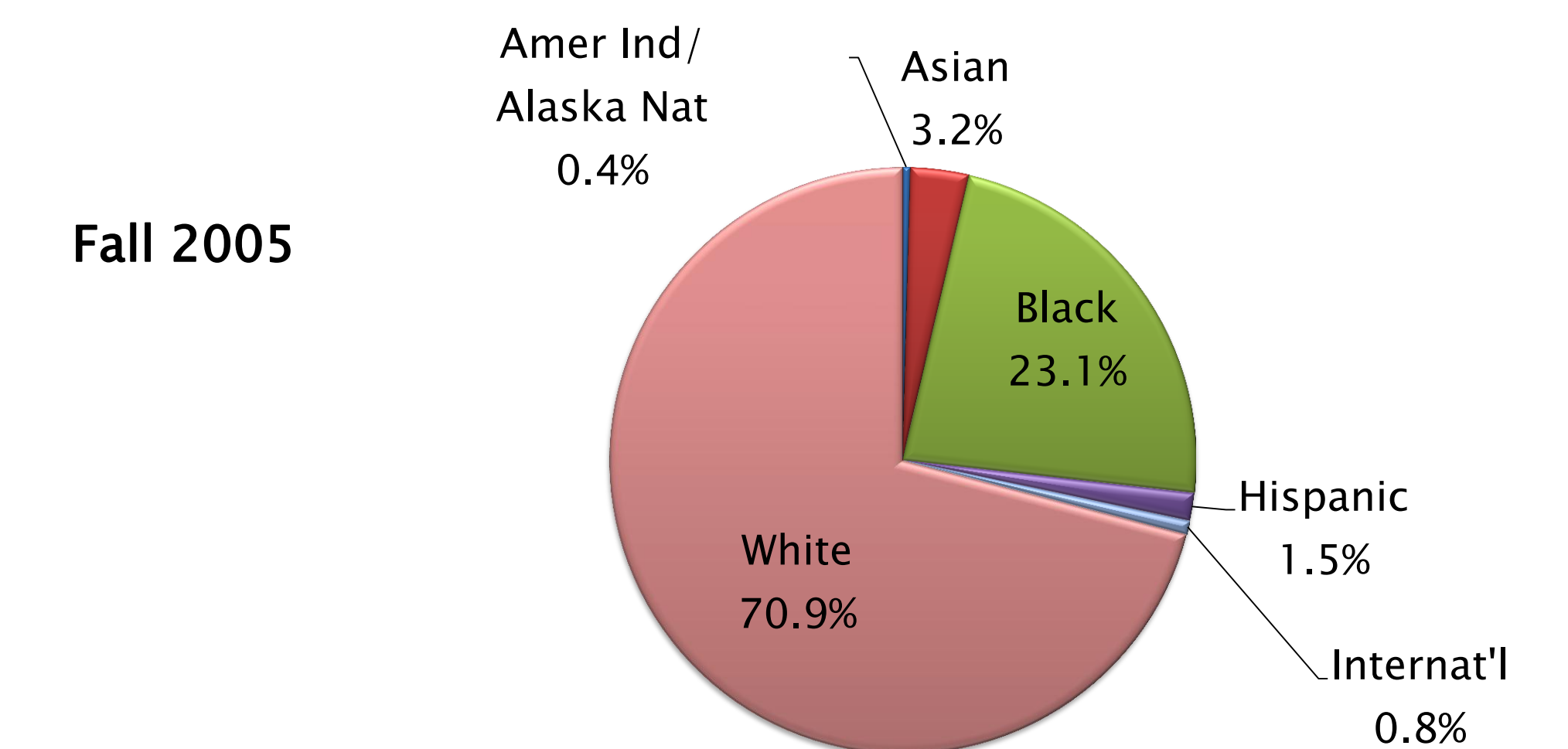
Staff by Assigned Position



Full-Time Instructional Faculty by Tenure Status



Staff by Race/Ethnicity*



*Beginning in Fall 2010, federal level changes in reporting of race/ethnicity resulted in the addition of "Hawaiian/ Pacific Islander", and "2 or More" categories.