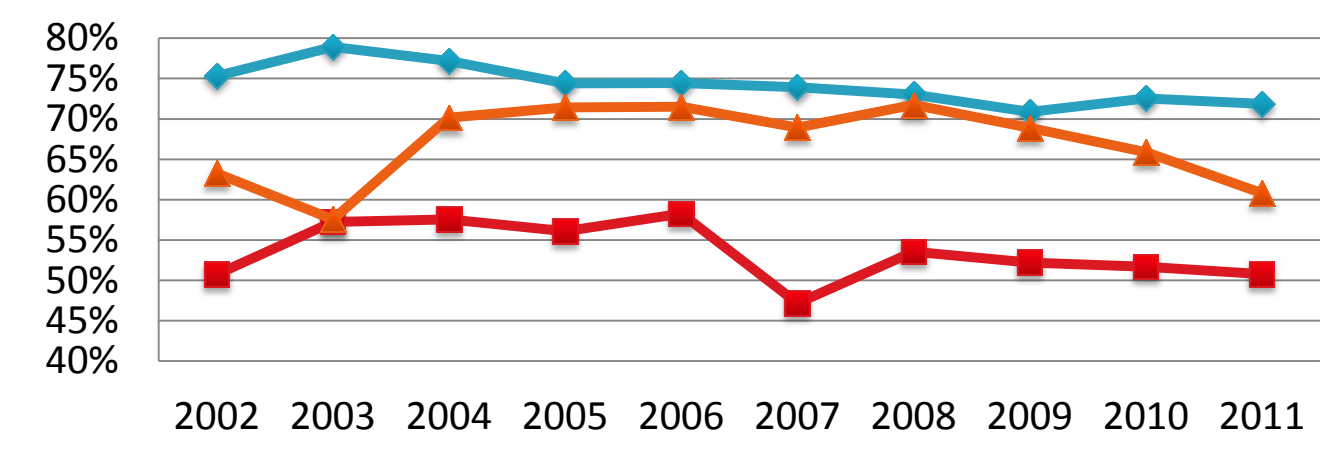


# WHO ARE UMBC'S PEERS?

**Our Ten Current Peers:**  
(as determined through mandated process with MHEC and USM based on demographic and financial variables)

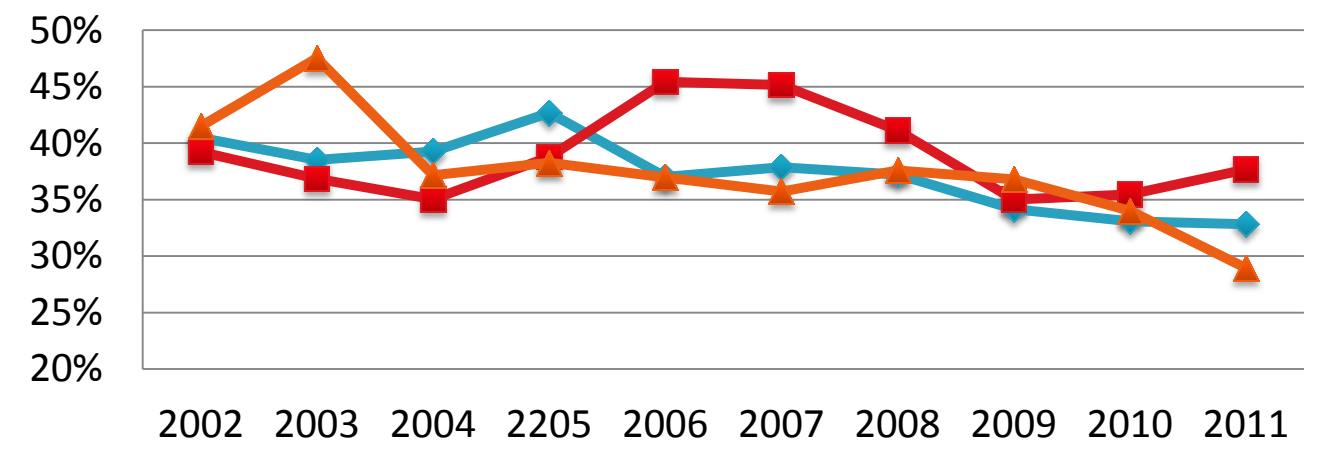
- University of Arkansas
- University of California - Riverside
- University of California - Santa Cruz
- University of Massachusetts - Amherst
- Mississippi State University
- New Jersey Institute of Technology
- Oklahoma State University
- University of Rhode Island
- Clemson University
- University of Wyoming

**% of New Freshmen Applicants Admitted Fall 2002 to Fall 2011**



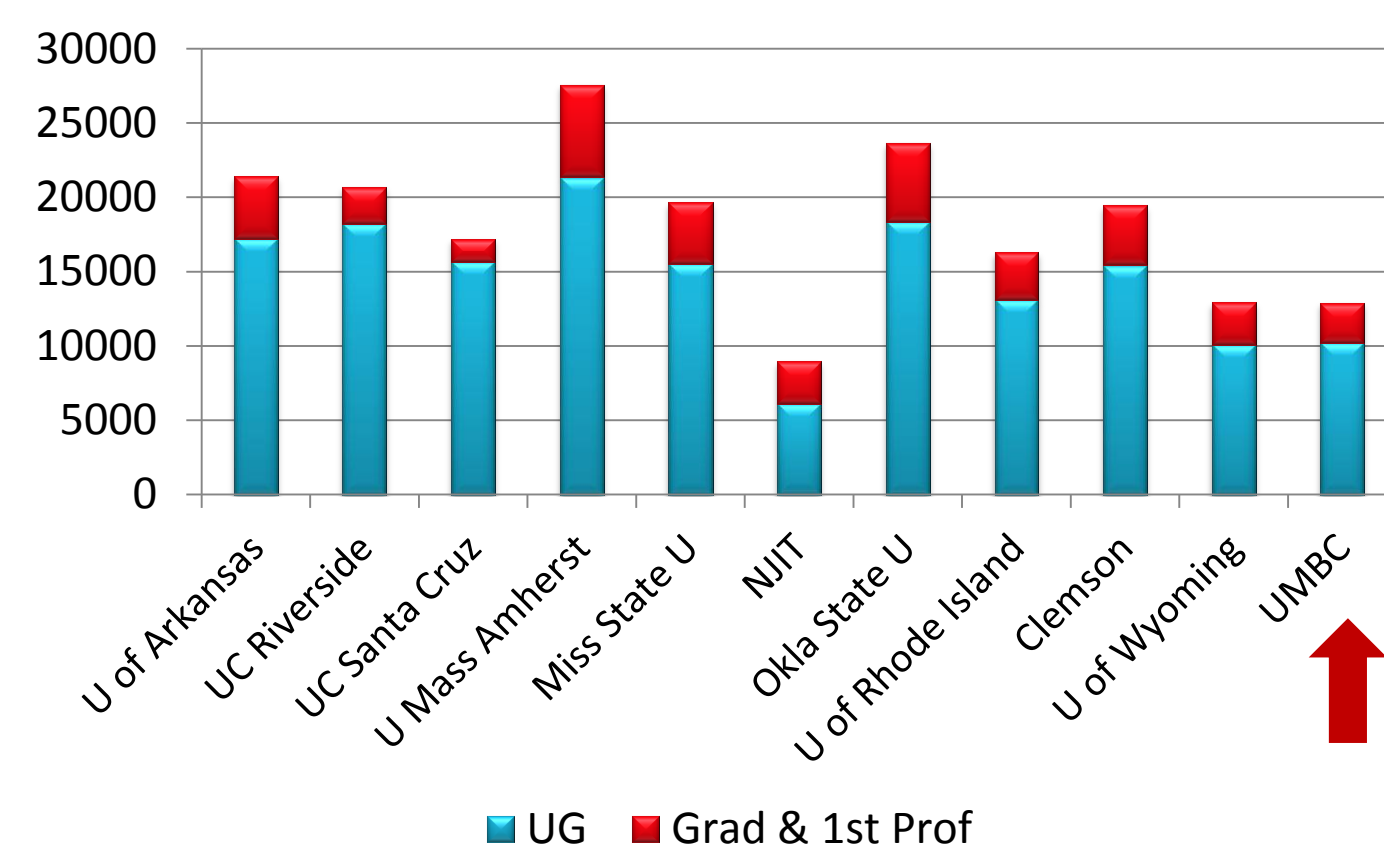
Source: IPEDS Applications Survey

**% of New Freshmen Admits Enrolled Fall 2002 to Fall 2011**



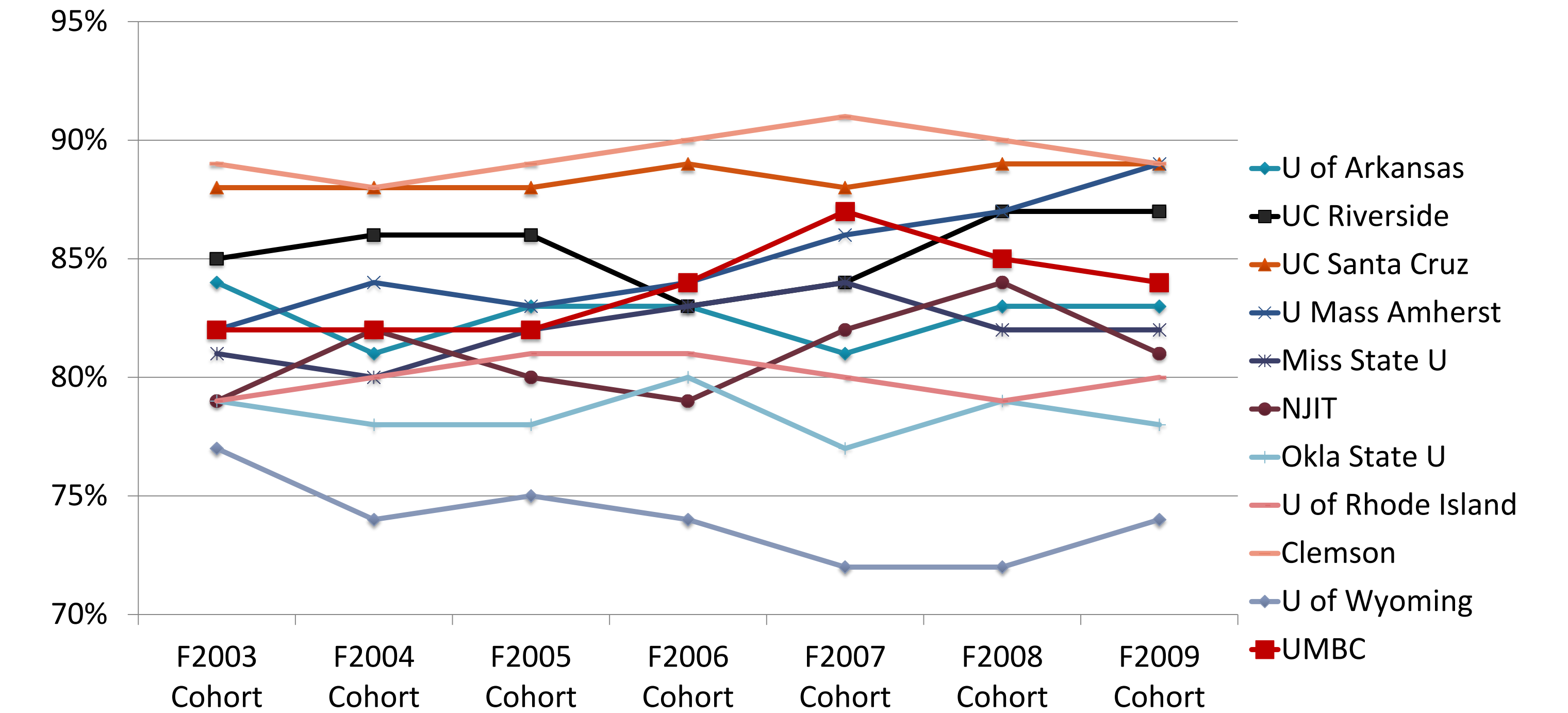
Source: IPEDS Applications Survey

**Fall 2010 Enrollment by Level UMBC vs. Ten Current Peers**



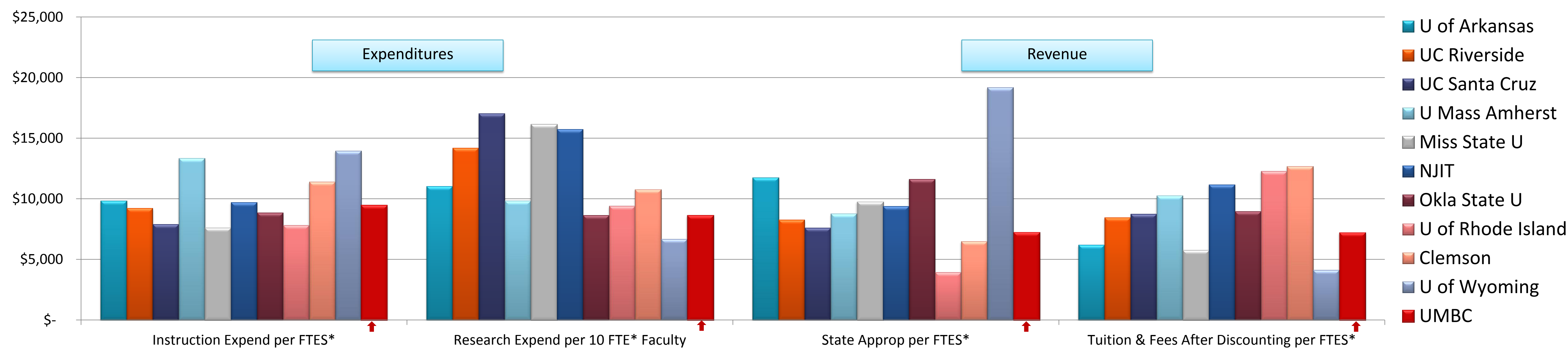
Source: IPEDS Enrollment

**One-Year Retention of First Time Full-Time Degree Seeking Freshmen**



Source: IPEDS Enrollment

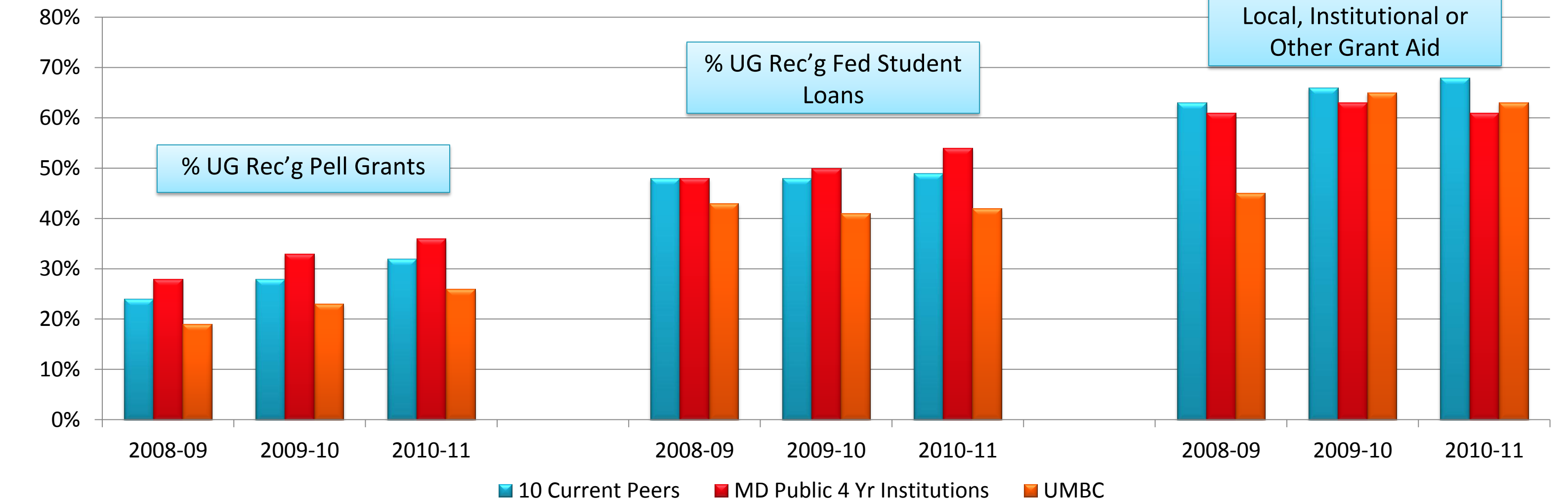
**Selected Financial Measures- UMBC vs. 10 Current Peers**



\* FTES=FT+1/3 PT headcount students; FTE Faculty=FT+1/3 PT Total Faculty

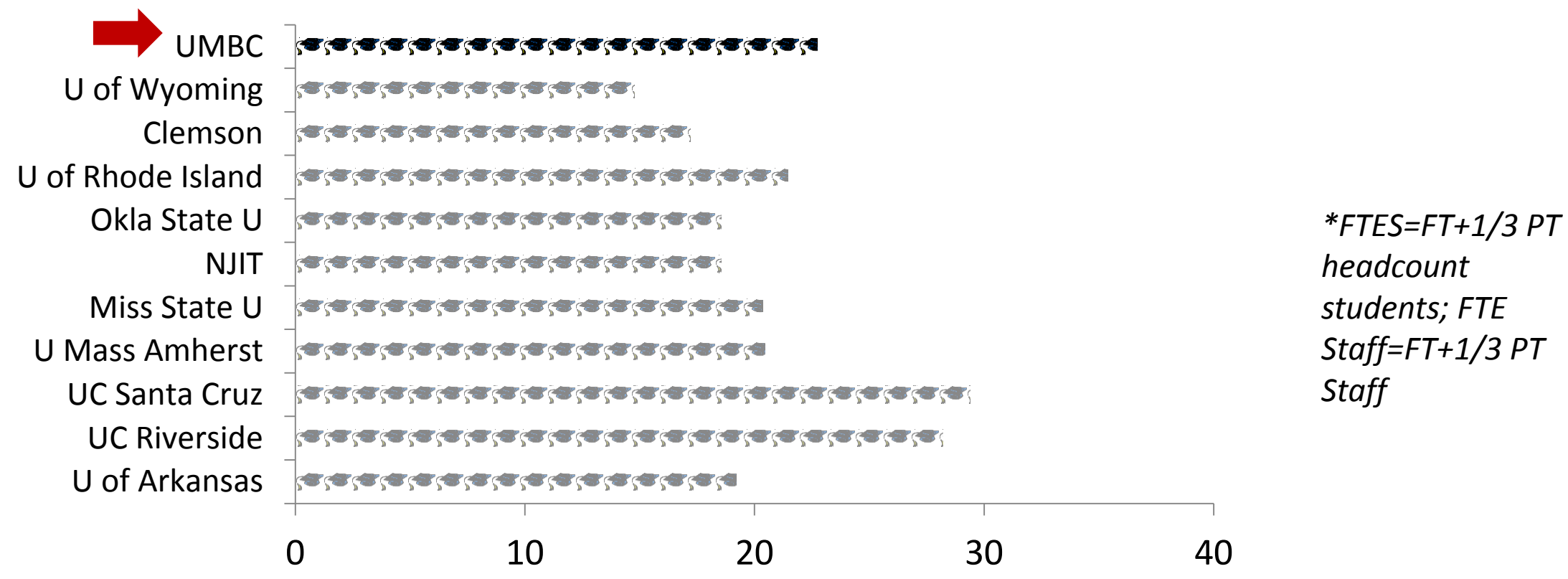
Source: IPEDS Finance, Enrollments & Human Resources

**Financial Aid**



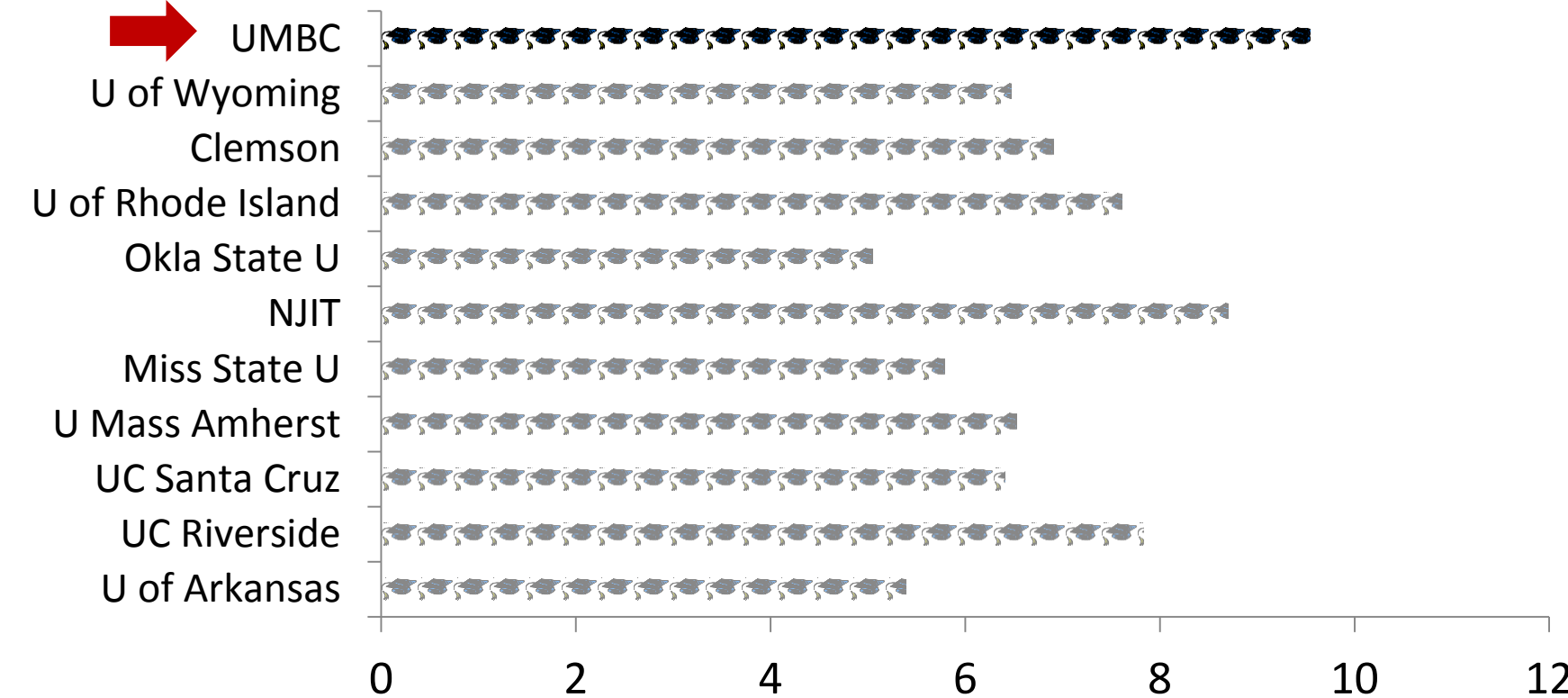
Source: IPEDS Student Financial Aid

**FTES\* per Full-Time Instructional Faculty - Fall 2010**

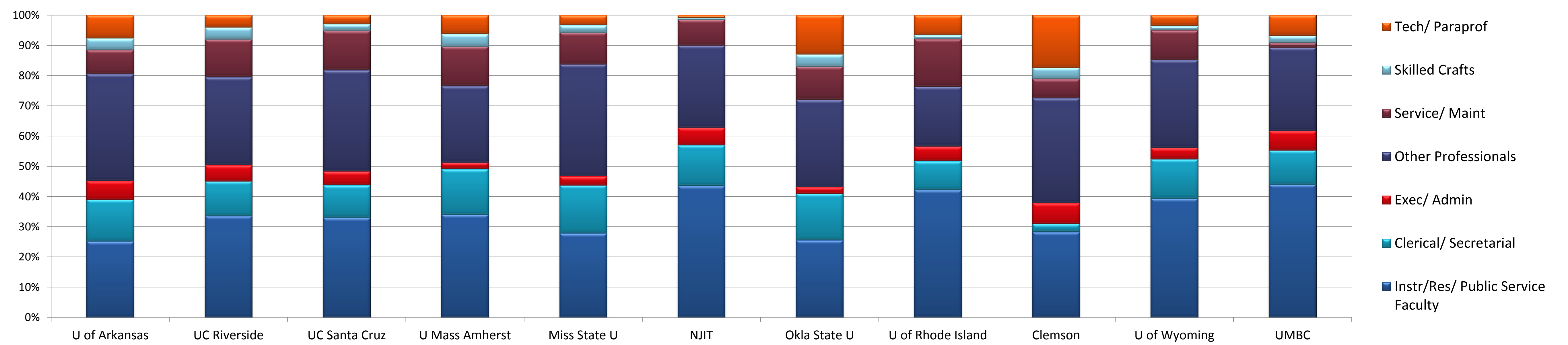


Source: IPEDS Human Resources & Enrollment Surveys

**FTES\* per FTE\* Staff- Fall 2010**



**Percentage of Fall 2011 Employees by Assigned Position: UMBC & Ten Current Peers**



Source: IPEDS Human Resources

